

# Company Profile

## Qualification Document

*New Face Same Dream*



## Company Profile

CNP NM Fire-fighting System Co., Ltd (Hereinafter referred to as NM Fire) is the subsidiary of Nanfang Zhongjin Environment Co., Ltd, NM Fire is located in Hunan Changsha Economic and Technological Development Zone, mainly produce and sell Diesel engine & Motor fire pump groups , controllers and fire pumps which are in accordance with domestic & international standards and have gotten related certifications .

NM Fire is The first company in the world who was authorized by UL CCIC as witness testing center for both fire pumps and fire fighting engines.

NM Fire is The first company in China has got UL listed fire fighting diesel engine.





The General Manager Mr. Liu Weiping of CNP NM Fire accepted the interview by hcfire360 said,

*NM Fire Broke the Long-term Monopoly Situation of Fire Products by European and American Brand, Ingenuity Casting Fire Security.*

By Li Chenyu / hcfire360

Sep.26,2017

On Sep.5, the 17th International Fire Protection Equipment Technology Conference & Exposition sponsored by the China Fire Protection Association was held at the Beijing New International Exhibition Center. Participants are from the world's top fire companies and well-known enterprises in fire fields.

During the exhibition, CNP NM Fire Fighting System Co., Ltd got the UL Certificate for fire fighting engines. It is the China's first enterprise to have UL certificate for diesel fire engine. The general manager Mr. Liu Weiping of CNP NM Fire accepted an interview by hcfire360. Mr. Liu said, fire fighting is manifested as a special need in the development of social civilization to a certain extent, the level of fire technology in a country is closely related to its level of economic development. As China's economic development started in the late 1980s, our fire technology and standards are far behind the developed countries in Europe and America. At present, the globally recognized fire standard was UL/FM and NFPA standard that was set by the United States over a hundred years ago.



NM Fire is the first member of NFPA from Chinese pump manufacturers. In March of 2017, it became the first enterprise of China to have both UL & FM two international certification of fire pumps. In September the same year, NM Fire again became the China's first enterprise to have UL certificate for diesel fire engine. Currently, only 3 or 4 companies in the world have obtained fire engine certification. NM Fire is also the first company in the world to have both UL Listed fire pumps and fire engines. This series of achievements will completely break the long-term monopoly situation of fire products by European and American brand, which speed up the pace of Chinese enterprises to go overseas.





The fire disaster may happen in any case. The function of fire pump set is to control the fire or put it out at the beginning. For fire fighting, time is the life. Fire pump is the heart of the whole fire system, quickly start, continuously and reliably operated fire pumps to provide water seems very important.

Fire pump users come from over the world, in very low temperature, high temperature, high altitude and other harsh natural environment conditions, ordinary diesel engine can not start or difficult to start, so the "low reliability" of ordinary diesel can not meet the fire requirements. But the fire engine technology is very complex, after a professional modification on ordinary diesel engine, it can meet the requirements of fire engine. The UL1247 fire engine standards are pre-setting the most demanding conditions. If the fire engine can work properly in these extreme conditions, it can prove its high "reliability."

At present, there're only 3 or 4 companies from America got the UL certificate for diesel fire engine. Fire engine is very valuable because of its high technical content, its cost accounted for more than 50% in the entire pump system. If our domestic pump enterprises need to import diesel fire engines from the United States, will lose the ability to compete with other competitors around the world and greatly increase the using cost of the domestic users.

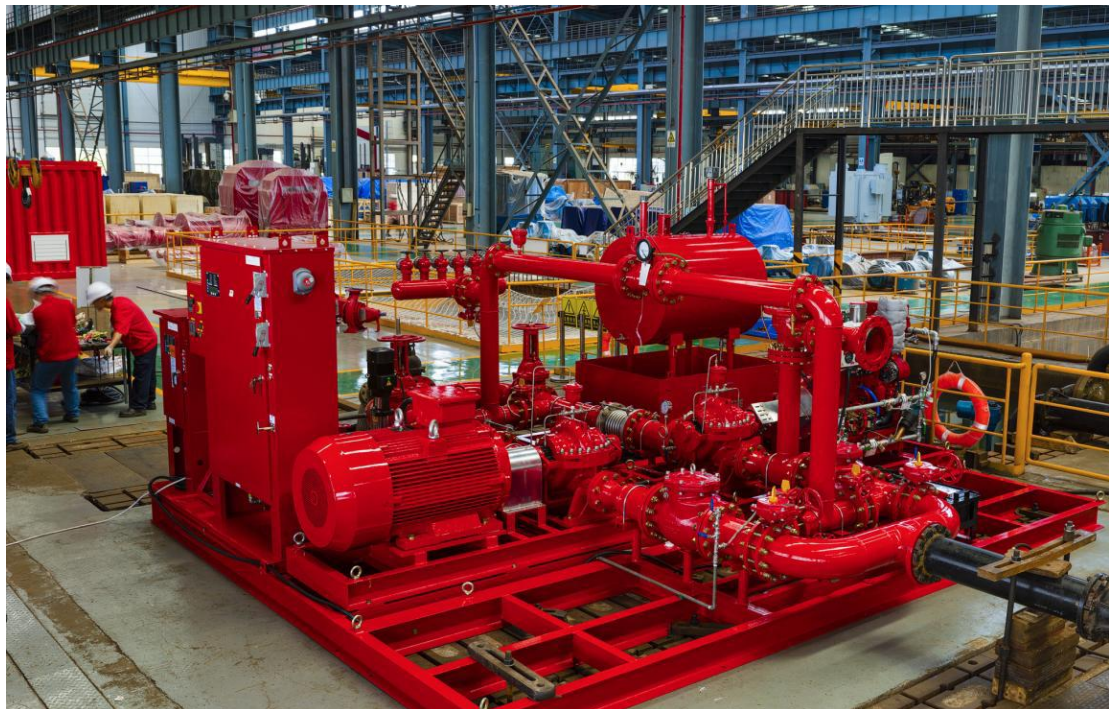


The Chinese and Foreign Exhibitors visit the booth of CNP NM Fire

**So many “first” consisted of the CNP NM Fire Team’s five years’ hard work and huge investment by enterprise.**

As the first Chinese member of NFPA, NM Fire has a strong technical team with more than 20 years’ global fire equipment R & D experience, including a number of foreign engineers and experts. NM Fire became the first company in the world to have both UL Listed fire pumps and fire engines, which consisted of the NM Fire Team’s 5 years’ hard work and huge investment by enterprise.

This series of historical breakthrough results play a very important role in enhancing the technical level of China’s fire industry and effectively protect national life and property. This is also the primary goal we pursue.



NFPA20 HSC Fire Pump Package

**Breakthrough technology to fill the gaps -----To break the game rules of the industry , change the future pattern of the industry, win a huge space for the development of China's fire pump industry .**

A few of domestic manufactures have got UL/FM certificates already for other products of the fire fighting system, such as smoke detectors, alarm system, sprinkler, pipe and valves etc. They are all close to the world’s advanced level. As the heart of the fire fighting system , fire pump’s technology level is far below the international standard, which seriously affected the reliability of the system. NM Fire’s breakthrough on fire pump technology greatly improved the safety and reliability of



the water sprinkler system.

Secondly, on the basis of pump technology's breakthrough, NM Fire has got the UL certificate of fire diesel engine, which is the most difficult technical in NFPA20 system. There are nearly 50 enterprises got UL/FM certificate for fire pumps in the world, but only 3 or 4 enterprises got UL/FM certificate for diesel fire engines, most of which are from America. Due to historical reasons, these diesel engine manufactures have been the master of global fire pump filed.

As China's fire pump manufacturers, the historic breakthrough of NM Fire has an unusual significance, it broke the game rules of the industry. In future, it will change the pattern of the world's fire pump industry in the past 100 years, win a huge space for the development of China's fire pump industry.

**Along the B & R to the world ----- completely break the long-term monopoly situation of fire products by European and American brand, do a great support for Chinese enterprises step to the world.**

With the implementation of the B&R, a lot of Chinese enterprises go overseas and enter into the global market competition. As a worldwide-recognized standard of fire fighting field, UL/FM and NFPA20 have dominated the global market. It will be the first problem that our enterprises will face when they go abroad. This series of achievements by NM Fire will completely break the long-term monopoly by European and American enterprises in this field, speed up the pace of Chinese enterprise to go overseas.

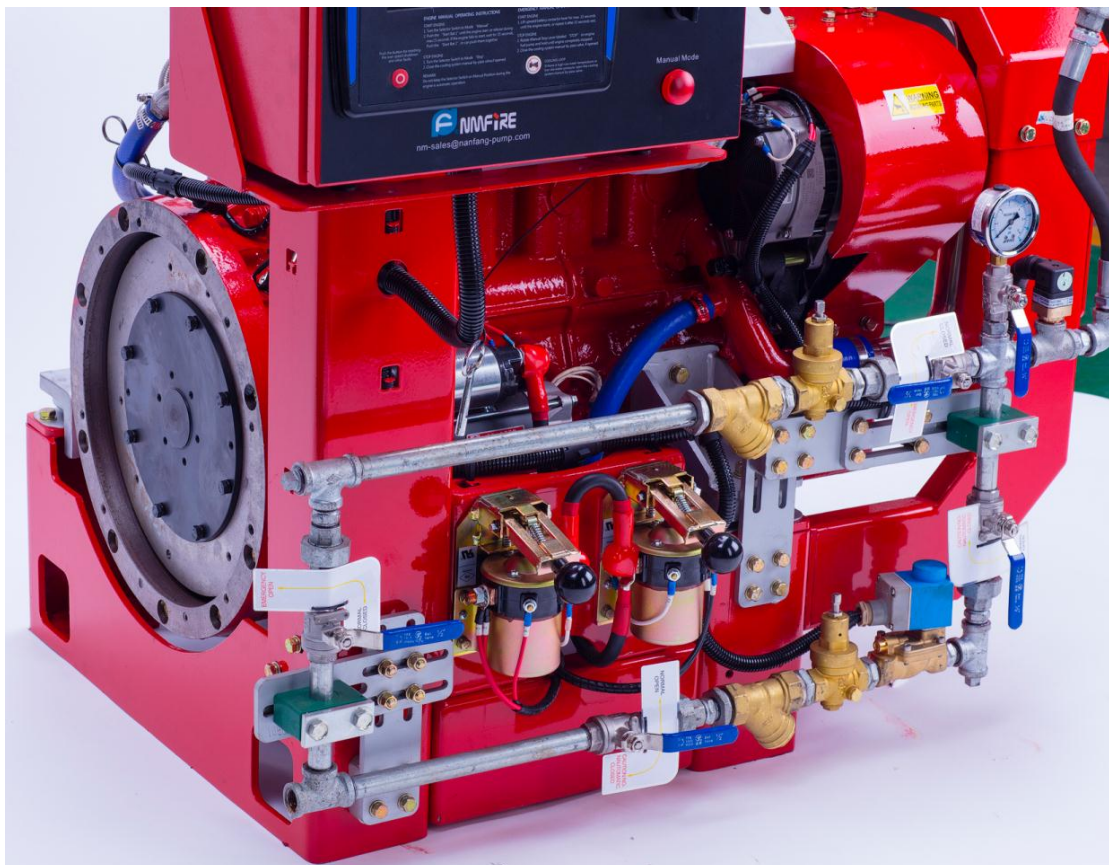
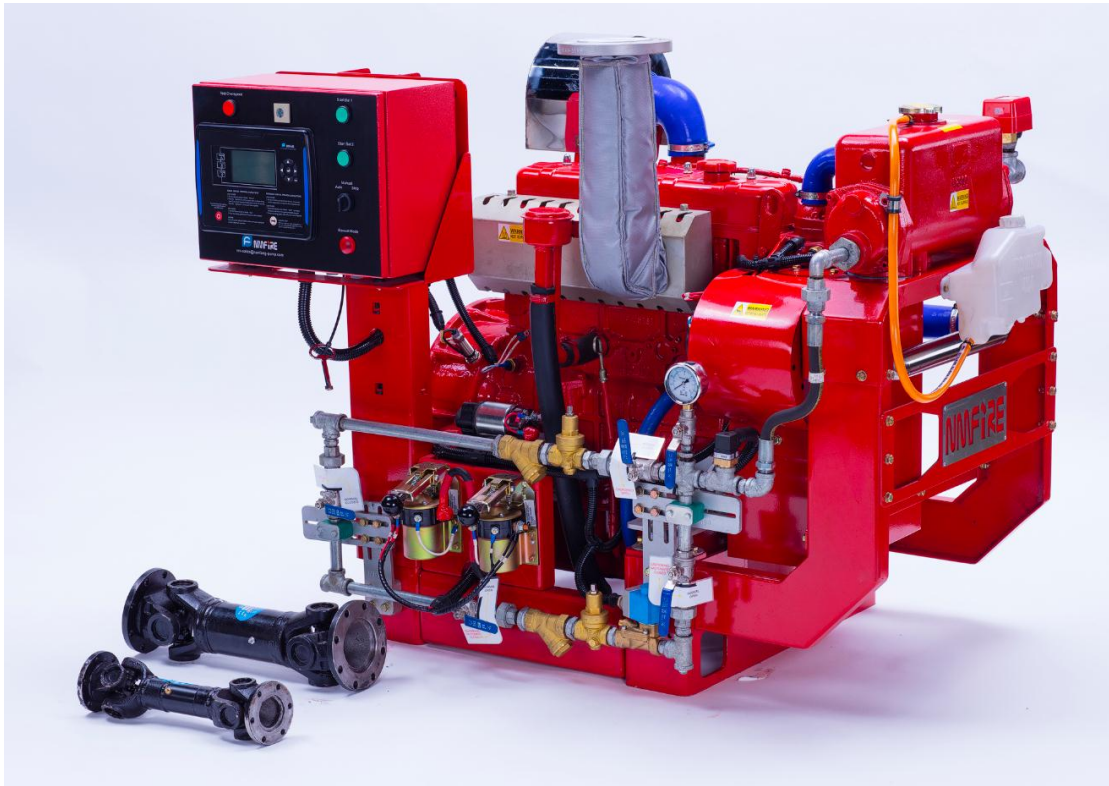
“The road ahead will be long and our climb will be steep”, NM Fire will constantly build the good reputation for “MADEINCHINA”, efforts to provide high quality products and convenient, high-quality service for customers, build the safe and nice Chinese dream.



NM Fire Team

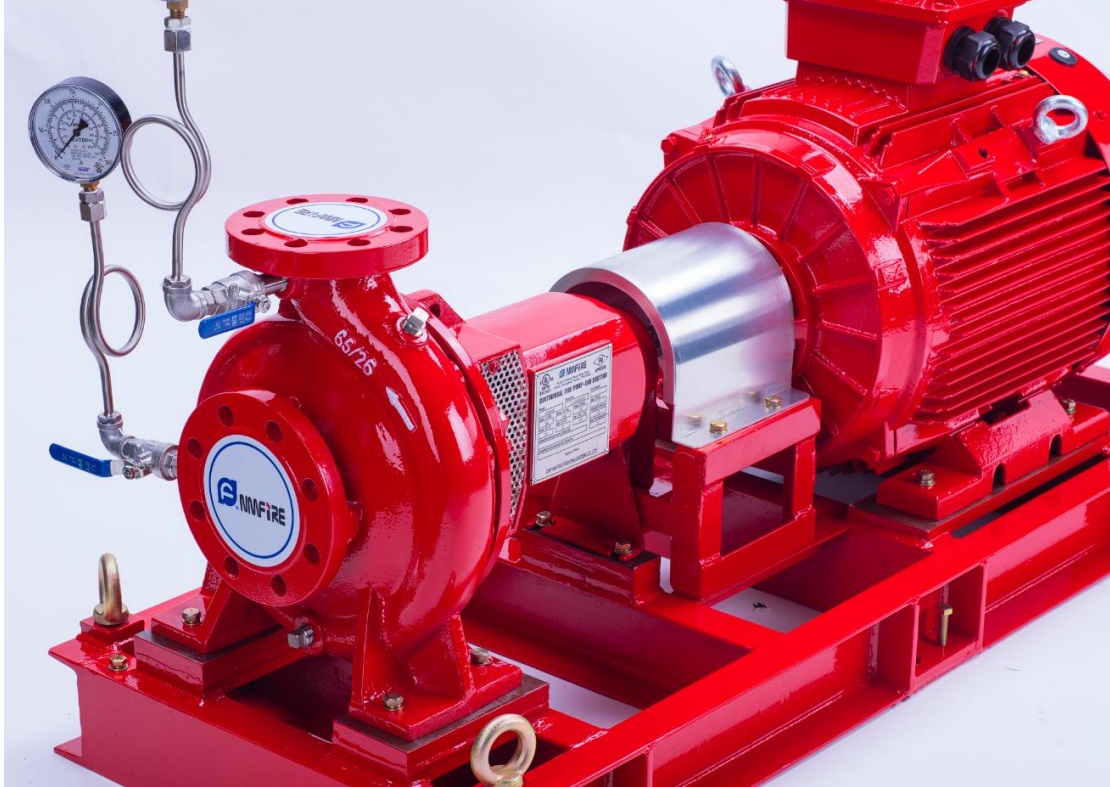


UL Listed Diesel Engine  
Power Range: **30HP to 2000HP**





UL/FM End Suction pump  
Flow Range: **50GPM to 750GPM**





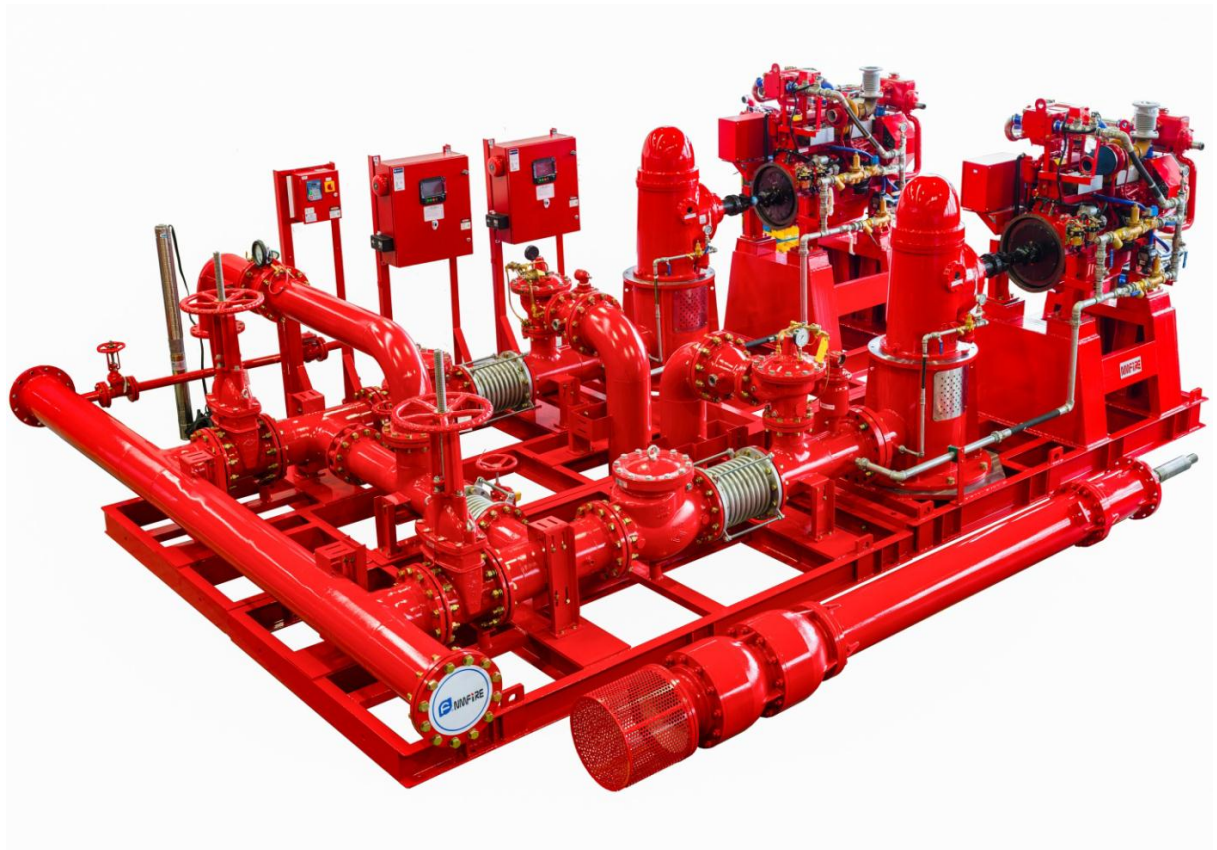
UL/FM Split Casing pump  
Flow Range: **300GPM to 8000GPM**





UL Listed VTP

Flow Range: **50GPM to 5000GPM**



**NFPA20 Containerized Fire Pump Package**









# Qualification Document

*New Face Same Dream*







Certificate CN14/30955

The management system of

# CNP NM FIRE FIGHTING SYSTEM CO., LTD.

Factory Area of CNP Changsha Co., Ltd , No.45 Xichong Road, Quantang Street, Changsha Economic & Technological Development Zone, Changsha City, Hunan Province, P.R. China

Unified Social Credit Code 91430100081352592F



has been assessed and certified as meeting the requirements of

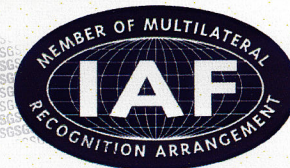
## ISO 9001:2015

For the following activities

**Design and manufacture of fire pump set**

Further clarifications regarding the scope of this certificate and the applicability of ISO 9001:2015 requirements may be obtained by consulting the organisation

This certificate is valid from 12 August 2017 until 11 August 2020 and remains valid subject to satisfactory surveillance audits. Recertification audit due a minimum of 60 days before the expiration date. Issue 3. Certified since 12 August 2014



Authorised by

SGS United Kingdom Ltd  
Rossmore Business Park Ellesmere Port Cheshire CH65 3EN UK  
t +44 (0)151 350-6666 f +44 (0)151 350-6600 [www.sgs.com](http://www.sgs.com)

The certification information can be verified on the web site of Certification and Accreditation Administration of the People's Republic of China [www.cnca.gov.cn](http://www.cnca.gov.cn)



0005

SGS 9001 2015 1015

Page 1 of 1



This document is issued by the Company subject to its General Conditions of Certification Services accessible at [www.sgs.com/terms\\_and\\_conditions.htm](http://www.sgs.com/terms_and_conditions.htm). Attention is drawn to the limitations of liability, indemnification and jurisdictional issues established therein. The authenticity of this document may be verified at <http://www.sgs.com/en/certified-clients-and-products/certified-client-directory>. Any unauthorized alteration, forgery or falsification of the content or appearance of this document is unlawful and offenders may be prosecuted to the fullest extent of the law.





## CERTIFICATE OF PARTICIPATION

Issued by  
UL LLC

### CNP NM FIRE FIGHTING SYSTEM CO LTD

No.45 Xi Chong Road Quan Tang Street, Changsha ETDZ  
Changsha, Hunan, 410100, China

to congratulate the company for having been assessed  
and found eligible to participate in the

### ***-Witness Test Data Program-***

*For*

*UL 448, UL 448A, UL 448B, UL 448C, UL1247*

Company Party Site Number: 1122026

Issued: April 26, 2017

Expired: April 26, 2019

A handwritten signature in yellow ink, located in the bottom right corner of the certificate.

Yeo Fong  
Business Development Director  
Building, Fire & Life Safety Technologies





# National Fire Protection Association

Be it known that NFPA recognizes

CNP NM Firefighting Sys Co Ltd

as a Member in Good Standing and is entitled to  
all the rights, honors and privileges of membership.



In witness thereof, the Seal of this Association  
and the signature of its duly appointed officer is  
affixed to this certificate.

April 28, 2016

Date of Issue

Jim Pauley, President



EUROPEAN FIRE  
SPRINKLER NETWORK

*recognises*

*NM Fire Pumps*

*as a manufacturer member in good standing,  
entitled to the attendant rights of membership*

*Granted 11 July 2018*

---

*{Alan Brinson, Executive Director}*

# CERTIFICATE OF COMPLIANCE

**Certificate Number** 20181008-EX26721  
**Report Reference** EX26721-20181002  
**Issue Date** 2018-OCTOBER-08

**Issued to:** CNP NM FIRE FIGHTING SYSTEM CO LTD  
Factory Area of CNP Changsha Co Ltd  
No.45 Xi Chong Road  
Quan Tang Street, Changsha ETDZ  
Changsha  
Hunan 410100 CHINA

**This is to certify that  
representative samples of**

INTERNAL-COMBUSTION ENGINES FOR DRIVING  
STATIONARY FIRE PUMPS

See Addendum Page for Models/Product

Have been investigated by UL in accordance with the  
Standard(s) indicated on this Certificate.

**Standard(s) for Safety:**

UL 1247, Diesel Engines for Driving Stationary Fire Pumps.  
ULC C448A, Guide for the investigation of diesel engine for  
driving centrifugal fire pumps.

**Additional Information:**

See the UL Online Certifications Directory at  
[www.ul.com/database](http://www.ul.com/database) for additional information

Only those products bearing the UL Certification Mark should be considered as being covered by UL's  
Certification and Follow-Up Service.

Look for the UL Certification Mark on the product.



Bruce Mahrenholz, Director North American Certification Program  
UL LLC

Any information and documentation involving UL Mark services are provided on behalf of UL LLC (UL) or any authorized licensee of UL. For questions, please  
contact a local UL Customer Service Representative at <http://ul.com/aboutul/locations/>





**IMPROVED CERTIFICATIONS  
SEARCH TOOL. REGISTER NOW!**[LEARN MORE](#)**QYLU.EX26721****Internal-combustion Engines for Driving Stationary Fire Pumps**[Page Bottom](#)**Internal-combustion Engines for Driving Stationary Fire Pumps**[See General Information for Internal-combustion Engines for Driving Stationary Fire Pumps](#)**CNP NM FIRE FIGHTING SYSTEM CO LTD**

EX26721

Factory Area of CNP Changsha Co Ltd

No.45 Xi Chong Road

Quan Tang Street, Changsha ETDZ

Changsha, Hunan 410100 CHINA

**DIESEL ENGINES RATED FOR USE WITHIN SPEED RANGES**

Model	No. of Cylinders	Minimum		Maximum	
		Rated Speed (rpm)	Rated HP	Rated Speed (rpm)	Rated HP
NM6-114	6	1500	219	1760	255
		1760	255	1900	268
		1900	268	2100	280
NM6-128	6	1500	400	1760	457
		1760	457	1900	460
		1900	460	2020	426
NM6-102B	6	1760	101	2100	123
		2100	123	2350	134
		2350	134	2650	148
		2650	148	2980	153

Model	No. of Cylinders	Rated HP	Rated Speed (rpm)
NM4-90	4	51	2950
NM4-105	4	86	2950
NM6-102	6	126	2950

Trademark and/or Tradename: "NM FIRE",



南方安美

[Last Updated on 2018-10-08](#)[Questions?](#)[Print this page](#)[Terms of Use](#)[Page Top](#)



# Certificate of Compliance

This certificate is issued for the following:

## **Centrifugal Fire Pumps** (Axial Split-Case Type)

SCF150-100-320, SCF200-125-300, SCF200-125-380  
SCF200-150-460, SCF250-200-430, SCF300-250-490

### **Prepared for:**

CNP NM Fire Fighting System Co Ltd  
No 45 Xi Chong Road  
Quan Tang Street  
Changsha 410100  
China

FM Approvals Class: 1311

Approval Identification: 3058200

Approval Granted: March 24, 2017

To verify the product continues to be Approved please refer to [www.approvalguide.com](http://www.approvalguide.com).

Said Approval is subject to satisfactory field performance, continuing Surveillance Audits, and strict conformity to the constructions as shown in the Approval Guide, an online resource of FM Approvals.

A handwritten signature in black ink that reads 'D.B. Fuller'.

---

David B. Fuller  
ABP, Manager of Fire Protection  
FM Approvals  
1151 Boston-Providence Turnpike  
Norwood, MA 02062 USA



*Member of the FM Global Group*





# Certificate of Compliance

This certificate is issued for the following:

**Centrifugal Fire Pump**  
(Axial Split-Case Type)

**Model SCF250-200-350**

**Prepared For**

CNP NM Fire Fighting Systems Co., Ltd.  
No. 45 Xi Chong Road  
Quan Tang Street  
Changsha 410100  
China

**Design and Manufacturing**

CNP NM Fire Fighting Systems Co., Ltd.  
No. 45 Xi Chong Road  
Quan Tang Street  
Changsha 410100  
China

FM Approvals Class: 1311, dated August 2007

Approval Identification: 0003063636

Approval Granted: January 17, 2018

To verify the availability of the Approved product, please refer to [www.approvalguide.com](http://www.approvalguide.com)

Said Approval is subject to satisfactory field performance, continuing Surveillance Audits, and strict conformity to the constructions as shown in the Approval Guide, an online resource of FM Approvals.

A handwritten signature in black ink that reads 'D.B. Fuller'.

---

David B. Fuller  
VP – Manager, Fire Protection  
FM Approvals  
1151 Boston-Providence Turnpike  
Norwood, MA 02062 USA



*Member of the FM Global Group*



# Certificate of Compliance

This certificate is issued for the following:

## Centrifugal Fire Pumps (Axial Split-Case Type)

Product	Rated Capacity, (gal/min)	Rated Capacity, (dm <sup>3</sup> /min)	Rated Net Head at Rated Capacity, psi	Rated Net Head at Rated Capacity, kPa	Rated Speed, r/min	Suction Inlet, dia., in.	Discharge Outlet, dia., in.	Stage(s)
SCF125-80-350G	750	2840	169-251	1165-1730	2980	5	3	1

### Prepared for:

CNP NM Fire Fighting Systems Co Ltd  
No 45 Xi Chong Road  
Quan Tang Street  
Changsha 410100 China

FM Approvals Class: 1311

Approval Identification: 3060687

Approval Granted: April 30, 2018

To verify the product continues to be Approved please refer to [www.approvalguide.com](http://www.approvalguide.com).

Said Approval is subject to satisfactory field performance, continuing Surveillance Audits, and strict conformity to the constructions as shown in the Approval Guide, an online resource of FM Approvals.

A handwritten signature in black ink that reads 'D.B. Fuller'.

David B. Fuller  
VP, Manager - Fire Protection  
FM Approvals  
1151 Boston-Providence Turnpike  
Norwood, MA 02062 USA



*Member of the FM Global Group*





# Certificate of Compliance

Product	Rated Capacity, (gal/min)	Rated Capacity, (dm <sup>3</sup> /min)	Rated Net Head at Rated Capacity, psi	Rated Net Head at Rated Capacity, kPa	Rated Speed, r/min	Suction Inlet, dia., in.	Discharge Outlet, dia., in.	Stage(s)
SCF150-100-320	500	1895	123-186	850-1280	2650	6	4	1
SCF150-100-320	750	2840	116-184	800-1270	2650	6	4	1
SCF150-100-320	750	2840	138-198	950-1365	2980	6	4	1
SCF150-100-320	1000	3785	109-179	750-1235	2650	6	4	1
SCF150-100-320	1000	3785	132-193	910-1330	2980	6	4	1
SCF200-125-300	1250	4730	115-189	795-1305	2980	8	5	1
SCF200-125-380	1250	4730	125-177	860-1220	2200	8	5	1
SCF200-150-460	1500	5680	123-182	850-1255	1800	8	6	1
SCF200-150-460	2000	7570	125-175	860-1205	1800	8	6	1
SCF250-200-430	2500	9465	138	950	1800	10	8	1
SCF250-200-430	2500	9465	134-190	925-1310	2100	10	8	1
SCF250-200-430	3000	11,355	154-188	1060-1295	2100	10	8	1
SCF300-250-490	3000	11,355	130-192	895-1325	1800	12	10	1
SCF300-250-490	3500	13,250	125-189	860-1305	1800	12	10	1
SCF300-250-490	4000	15,140	120-185	825-1275	1800	12	10	1



Member of the FM Global Group

**Listing Sheet**

☒Fire Pump Installation Systems ☒Fire Pumps ☒Centrifugal Fire Pumps, Vertical Shaft, Turbine Type

Product ▼	Listing Country	Rated Capacity, (gal/min)	Rated Capacity, (dm³/min)	Rated Net Head at Rated Capacity, psi	Rated Net Head at Rated Capacity, kPa	Rated Speed, r/min	Suction Inlet, dia., in.	Discharge Outlet, dia., in.	Stage(s)	Certification Type	Primary Class of Work
SCF150-100-320	China	500	1895	123-186	850-1280	2650	6	4	1	FM Approved	1311-Centrifugal Fire Pumps, Horz
SCF150-100-320	China	750	2840	116-184	800-1270	2650	6	4	1	FM Approved	1311-Centrifugal Fire Pumps, Horz
SCF150-100-320	China	750	2840	138-198	950-1365	2980	6	4	1	FM Approved	1311-Centrifugal Fire Pumps, Horz
SCF150-100-320	China	1000	3785	109-179	750-1235	2650	6	4	1	FM Approved	1311-Centrifugal Fire Pumps, Horz
SCF150-100-320	China	1000	3785	132-193	910-1330	2980	6	4	1	FM Approved	1311-Centrifugal Fire Pumps, Horz
SCF200-125-300	China	1250	4730	115-189	795-1305	2980	8	5	1	FM Approved	1311-Centrifugal Fire Pumps, Horz
SCF200-125-380	China	1250	4730	125-177	860-1220	2200	8	5	1	FM Approved	1311-Centrifugal Fire Pumps, Horz
SCF200-150-460	China	1500	5680	123-182	850-1255	1800	8	6	1	FM Approved	1311-Centrifugal Fire Pumps, Horz
SCF200-150-460	China	2000	7570	125-175	860-1205	1800	8	6	1	FM Approved	1311-Centrifugal Fire Pumps, Horz
SCF250-200-350	China	2000	7570	124-239	855-1648	2980	10	8	1	FM Approved	1311-Centrifugal Fire Pumps, Horz
SCF250-200-350	China	2500	9465	115-227	793-1565	2980	10	8	1	FM Approved	1311-Centrifugal Fire Pumps, Horz
SCF250-200-430	China	2500	9465	138	950	1800	10	8	1	FM Approved	1311-Centrifugal Fire Pumps, Horz
SCF250-200-430	China	2500	9465	134-190	925-1310	2100	10	8	1	FM Approved	1311-Centrifugal Fire Pumps, Horz
SCF250-200-430	China	3000	11,355	154-188	1060-1295	2100	10	8	1	FM Approved	1311-Centrifugal Fire Pumps, Horz
SCF300-250-490	China	3000	11,355	130-192	895-1325	1800	12	10	1	FM Approved	1311-Centrifugal Fire Pumps, Horz
SCF300-250-490	China	3500	13,250	125-189	860-1305	1800	12	10	1	FM Approved	1311-Centrifugal Fire Pumps, Horz
SCF300-250-490	China	4000	15,140	120-185	825-1275	1800	12	10	1	FM Approved	1311-Centrifugal Fire Pumps, Horz





# Certificate of Compliance

This certificate is issued for the following:

**Centrifugal Fire Pumps  
(Horizontal, End Suction Type)**

**ESF50/26, ESF65/26 and ESF80/26  
(see attached listing)**

**Prepared for:**

CNP NM Fire Fighting Systems Co., Ltd.  
No 45 Xi Chong Road  
Quan Tang Street  
Changsha 410100  
China

FM Approvals Class: 1312

Approval Identification: 3060688

Approval Granted: May 17, 2018

To verify the product continues to be Approved please refer to [www.approvalguide.com](http://www.approvalguide.com).

Said Approval is subject to satisfactory field performance, continuing Surveillance Audits, and strict conformity to the constructions as shown in the Approval Guide, an online resource of FM Approvals.

A handwritten signature in black ink, appearing to read 'D.B. Fuller', written over a horizontal line.

David B. Fuller  
VP, Manager - Fire Protection  
FM Approvals  
1151 Boston-Providence Turnpike  
Norwood, MA 02062 USA



*Member of the FM Global Group*



# Certificate of Compliance

Product	Rated Capacity, (gal/min)	Rated Capacity, (dm <sup>3</sup> /min)	Rated Net Head at Rated Capacity, psi	Rated Net Head at Rated Capacity, kPa	Rated Speed, r/min	Suction Inlet, dia., in.	Discharge Outlet, dia., in.	Stage(s)
ESF50/26	200	755	103-138	710-950	2980	2.5	2	1
ESF50/26	250	945	100-137	690-945	2980	2.5	2	1
ESF65/26	250	945	115-143	795-985	2980	3	2.5	1
ESF65/26	300	1135	115-143	795-985	2980	3	2.5	1
ESF65/26	400	1515	113-141	780-970	2980	3	2.5	1
ESF65/26	450	1705	111-138	765-950	2980	3	2.5	1
ESF65/26	500	1895	110-135	760-930	2980	3	2.5	1
ESF80/26	500	1895	112-137	770-945	2980	4	3	1
ESF80/26	750	2840	104-131	715-905	2980	4	3	1



*Member of the FM Global Group*





# Certificate of Compliance

This certificate is issued for the following:

**Centrifugal Fire Pumps  
(Horizontal, End Suction Type)**

**MODELS ESF50-20, ESF65-20 and ESF80-20**  
(see attached listing)

**Prepared for:**

CNP NM Fire Fighting System Co., Ltd.  
No 45 Xi Chong Road  
Quan Tang Street  
Changsha, Hunan 410100  
China

FM Approvals Class: 1319, dated January 2018

Approval Identification: 3062341

Approval Granted: August 27, 2018

To verify the product continues to be Approved please refer to [www.approvalguide.com](http://www.approvalguide.com).

Said Approval is subject to satisfactory field performance, continuing Surveillance Audits, and strict conformity to the constructions as shown in the Approval Guide, an online resource of FM Approvals.

A handwritten signature in dark ink, appearing to read 'D.B. Fuller', is written over a horizontal line.

David B. Fuller  
VP, Manager - Fire Protection  
FM Approvals  
1151 Boston-Providence Turnpike  
Norwood, MA 02062 USA



*Member of the FM Global Group*



# Certificate of Compliance

Model	Rated Capacity, (gal/min)	Rated Capacity, (dm <sup>3</sup> /min)	Rated Net Head at Rated Capacity, psi	Rated Net Head at Rated Capacity, kPa	Rated Speed, r/min	Suction Inlet, dia., in.	Discharge Outlet, dia., in.	Stage(s)
ESF50/20	200	755	72-100	495-690	2980	2.5	2	1
ESF50/20	250	945	70-100	485-690	2980	2.5	2	1
ESF50/20	200	755	104-143	715-985	3550	2.5	2	1
ESF50/20	250	945	102-142	705-980	3550	2.5	2	1
ESF65/20	250	945	86-108	595-745	2980	3	2.5	1
ESF65/20	300	1125	86-107	595-740	2980	3	2.5	1
ESF65/20	400	1515	83-104	570-143	2980	3	2.5	1
ESF65/20	450	1705	80-102	550-705	2980	3	2.5	1
ESF65/20	500	1895	78-99	540-685	2980	3	2.5	1
ESF65/20	250	945	113-152	780-1050	3550	3	2.5	1
ESF65/20	300	1125	112-152	770-1050	3550	3	2.5	1
ESF65/20	400	1515	108-150	745-1035	3550	3	2.5	1
ESF65/20	450	1705	105-148	725-1020	3550	3	2.5	1
ESF65/20	500	1895	101-146	695-1005	3550	3	2.5	1
ESF80/20	500	1895	90-99	620-685	2980	4	3	1
ESF80/20	750	2840	86-96	595-660	2980	4	3	1
ESF80/20	500	1895	128-142	880-980	3550	4	3	1
ESF80/20	750	2840	125-140	860-965	3550	4	3	1



Member of the FM Global Group



# CERTIFICATE OF COMPLIANCE

**Certificate Number** 20180625-EX27431  
**Report Reference** EX27431-20170728  
**Issue Date** 2018-JUNE-25

**Issued to:** CNP NM FIRE FIGHTING SYSTEM CO LTD  
Factory Area of CNP Changsha Co Ltd,  
No.45 Xi Chong Road,  
Quan Tang Street, Changsha ETDZ,  
Changsha, Hunan 410100 CHINA

**This is to certify that  
representative samples of**

CENTRIFUGAL FIRE PUMPS, END SUCTION  
Centrifugal Fire Pumps, End Suction, Single Stage.  
All models are intended for installation with the shaft in the  
horizontal position.  
Models: ESF 50/26, ESF 65/26, ESF 80/26, ESF 50/20,  
ESF 65/20, ESF 80/20, ESF 40/20, ESF 40/26.

Have been investigated by UL in accordance with the  
Standard(s) indicated on this Certificate.

**Standard(s) for Safety:** UL 448, Pumps for Fire-Protection Service;  
ULC/ORD-C448, Guide for the Investigation of Pumps for  
Fire Protection Service

**Additional Information:** See the UL Online Certifications Directory at  
[www.ul.com/database](http://www.ul.com/database) for additional information

Only those products bearing the UL Certification Mark should be considered as being covered by UL's  
Certification and Follow-Up Service.

Look for the UL Certification Mark on the product.



Bruce Mahrenholz, Director North American Certification Program

UL LLC

Any information and documentation involving UL Mark services are provided on behalf of UL LLC (UL) or any authorized licensee of UL. For questions, please  
contact a local UL Customer Service Representative at <http://ul.com/aboutul/locations/>



## DESCRIPTION

## PRODUCT COVERED:

Centrifugal Fire Pumps, End Suction

Rated Capacity	Size,	Model Designation	Rated Net Pressure Range,	Approx. Speed,	Maximum Working Pressure,	Impeller Diameter, mm.	
			PSI	RPM	PSI	Max	Min
*200	2-1/2x2	ESF <b>50/26</b>	105-140	2980	232	264	230
*250	2-1/2x2	ESF <b>50/26</b>	99-136	2980	232	264	230
*250	3x2-1/2	ESF <b>65/26</b>	119-147	2980	239	264	245
*300	3x2-1/2	ESF <b>65/26</b>	119-147	2980	239	264	245
*400	3x2-1/2	ESF <b>65/26</b>	119-141	2980	239	264	245
*450	3x2-1/2	ESF <b>65/26</b>	114-138	2980	239	264	245
*500	3x2-1/2	ESF <b>65/26</b>	111-135	2980	239	264	245
*500	4x3	ESF <b>80/26</b>	116-138	2980	232	264	245
*750	4x3	ESF <b>80/26</b>	105-132	2980	232	264	245
*200	2-1/2x2	ESF <b>50/20</b>	72-99	2980	232	225	195
*250	2-1/2x2	ESF <b>50/20</b>	69-99	2980	232	225	195
*200	2-1/2x2	ESF <b>50/20</b>	102-142	3550	232	225	195
*250	2-1/2x2	ESF <b>50/20</b>	101-141	3550	232	225	195
*250	3x2-1/2	ESF <b>65/20</b>	86-107	2980	232	225	210
*300	3x2-1/2	ESF <b>65/20</b>	86-107	2980	232	225	210
*400	3x2-1/2	ESF <b>65/20</b>	83-104	2980	232	225	210
*450	3x2-1/2	ESF <b>65/20</b>	80-102	2980	232	225	210
*500	3x2-1/2	ESF <b>65/20</b>	77-99	2980	232	225	210



Rated Capacity	Size,	Model Designation	Rated Net Pressure Range,	Approx. Speed,	Maximum Working Pressure,	Impeller Diameter, mm.	
			PSI	RPM	PSI	Max	Min
GPM (US)	inches						
250	3x2-1/2	ESF 65/20	113-152	3550	232	225	195
300	3x2-1/2	ESF 65/20	112-152	3550	232	225	195
400	3x2-1/2	ESF 65/20	108-150	3550	232	225	195
450	3x2-1/2	ESF 65/20	105-148	3550	232	225	195
500	3x2-1/2	ESF 65/20	101-145	3550	232	225	195
500	4x3	ESF 80/20	90-100	2980	232	225	210
750	4x3	ESF 80/20	87-98	2980	232	225	210
500	4x3	ESF 80/20	129-142	3550	232	225	210
750	4x3	ESF 80/20	127-142	3550	232	225	210
50	2-1/2x1-1/2	ESF 40/20	76-111	2980	232	225	190
100	2-1/2x1-1/2	ESF 40/20	72-109	2980	232	225	190
50	2-1/2x1-1/2	ESF 40/20	108-157	3550	232	225	190
100	2-1/2x1-1/2	ESF 40/20	105-157	3550	232	225	190
100	2-1/2x1-1/2	ESF 40/26	100-138	2980	232	264	225

# CERTIFICATE OF COMPLIANCE

**Certificate Number** 20180727-EX26748  
**Report Reference** EX26748-20160825  
**Issue Date** 2018-JULY-27

**Issued to:** CNP NM FIRE FIGHTING SYSTEM CO LTD  
Factory Area of CNP Changsha Co Ltd  
No.45 Xi Chong Road  
Quan Tang Street, Changsha ETDZ  
Changsha  
Hunan 410100 CHINA

**This is to certify that  
representative samples of**

CENTRIFUGAL FIRE PUMPS, SPLIT CASE  
Centrifugal Fire Pumps, Split Case:Models: SCF125-80-350G, SCF150-100-320, SCF200-125-300, SCF200-125-380, SCF200-150-460, SCF250-200-350, SCF250-200-430, SCF300-250-490, SCF125-100-300, SCF200-150-310  
SCF400-350-640

Have been investigated by UL in accordance with the Standard(s) indicated on this Certificate.

**Standard(s) for Safety:**

UL448 Standard for Centrifugal Fire Pumps for Fire Protection Service  
ULC/ORD-C448 Guide for the Investigation of Pumps for Fire Protection Service

**Additional Information:**

See the UL Online Certifications Directory at [www.ul.com/database](http://www.ul.com/database) for additional information

Only those products bearing the UL Certification Mark should be considered as being covered by UL's Certification and Follow-Up Service.

Look for the UL Certification Mark on the product.



Bruce Mahrenholz, Director North American Certification Program

UL LLC

Any information and documentation involving UL Mark services are provided on behalf of UL LLC (UL) or any authorized licensee of UL. For questions, please contact a local UL Customer Service Representative at <http://ul.com/aboutul/locations/>





# CERTIFICATE OF COMPLIANCE

**Certificate Number** 20181030-EX26748  
**Report Reference** EX26748-20181026  
**Issue Date** 2018-OCTOBER-30

**Issued to:** CNP NM FIRE FIGHTING SYSTEM CO LTD  
Factory Area of CNP Changsha Co Ltd  
No.45 Xi Chong Road  
Quan Tang Street, Changsha ETDZ  
Changsha, Hunan 410100 CHINA

**This is to certify that representative samples of** CENTRIFUGAL FIRE PUMPS, SPLIT CASE  
Model Designation: SCF150-125-250, SCF150-125-250S,  
SCF150-125-310, SCF250-200-500S, SCF150-125-400


Have been investigated by UL in accordance with the Standard(s) indicated on this Certificate.

**Standard(s) for Safety:** UL448, Centrifugal Fire Pumps for Fire Protection Service  
ULC/ORD-C448, Pumps for Fire Protection Service

**Additional Information:** See the UL Online Certifications Directory at  
[www.ul.com/database](http://www.ul.com/database) for additional information

Only those products bearing the UL Certification Mark should be considered as being covered by UL's Certification and Follow-Up Service.

Look for the UL Certification Mark on the product.



Bruce Mahrenholz, Director North American Certification Program  
UL LLC

Any information and documentation involving UL Mark services are provided on behalf of UL LLC (UL) or any authorized licensee of UL. For questions, please contact a local UL Customer Service Representative at <http://ul.com/aboutul/locations/>



# CERTIFICATE OF COMPLIANCE

**Certificate Number** 20190102-EX26748  
**Report Reference** EX26748-20181220  
**Issue Date** 2019-JANUARY-02

**Issued to:** CNP NM FIRE FIGHTING SYSTEM CO LTD  
Factory Area of CNP Changsha Co Ltd  
No.45 Xi Chong Road  
Quan Tang Street, Changsha ETDZ  
Changsha  
Hunan 410100 CHINA

**This certificate confirms that representative samples of** CENTRIFUGAL FIRE PUMPS, SPLIT CASE  
Models - SCF250-200-500, SCF300-250-640,  
SCF350-250-640

Have been investigated by UL in accordance with the Standard(s) indicated on this Certificate.


**Standard(s) for Safety:** UL448, Centrifugal Fire Pumps for Fire Protection Service  
ULC/ORD-C448, Guide for the Investigation of Pumps for Fire Protection Service

**Additional Information:** See the UL Online Certifications Directory at <https://iq.ulprospector.com> for additional information.

This *Certificate of Compliance* does not provide authorization to apply the UL Mark. Only the UL Follow-Up Services Procedure provides authorization to apply the UL Mark.

Only those products bearing the UL Mark should be considered as being UL Certified and covered under UL's Follow-Up Services.

Look for the UL Certification Mark on the product.



Bruce Mahrenholz, Director North American Certification Program  
UL LLC

Any information and documentation involving UL Mark services are provided on behalf of UL LLC (UL) or any authorized licensee of UL. For questions, please contact a local UL Customer Service Representative at <http://ul.com/about/locations/>





Work smarter with UL Product iQ™  
Improved access to UL's certification data.

Create your FREE ACCOUNT today!

## QXJY.EX26748 Centrifugal Fire Pumps, Split Case

[Page Bottom](#)

### Centrifugal Fire Pumps, Split Case

[See General Information for Centrifugal Fire Pumps, Split Case](#)

#### CNP NM FIRE FIGHTING SYSTEM CO LTD

EX26748

Factory Area of CNP Changsha Co Ltd

No.45 Xi Chong Road

Quan Tang Street, Changsha ETDZ

Changsha, Hunan 410100 CHINA


#### Fire pumps, single stage

Rated Capacity (gpm)	Size (in.)	Model Dsg	Rated Net Pressure Range (psi)	Approx Speed (rpm)	Max Working Pressure (psi)
750	5x3	SCF125-80-350G	169-251	2980	261
750	6x4	SCF150-100-320	138-198	2980	202
1000	6x4	SCF150-100-320	130-191	2980	202
1250	8x5	SCF200-125-300	116-190	2980	187
1250	8x5	SCF200-125-380	118-177	2200	261
1500	8x6	SCF200-150-460	115-181	1800	275
2000	8x6	SCF200-150-460	118-175	1800	275
2000	10x8	SCF250-200-350	123-239	2980	362
2500	10x8	SCF250-200-350	114-227	2980	362
2500	10x8	SCF250-200-430	138	1800	275
2500	10x8	SCF250-200-430	125-190	2100	275
3000	10x8	SCF250-200-430	144-187	2100	275
3500	12x10	SCF300-250-490	119-189	1800	290
4000	12x10	SCF300-250-490	114-185	1800	290
4500	12x10	SCF300-250-490	153-181	1800	290
300	5x4	SCF125-100-300	123 - 195	2980	400
400	5x4	SCF125-100-300	120 - 189	2980	400
450	5x4	SCF125-100-300	119 - 187	2980	400
500	5x4	SCF125-100-300	117-184	2980	400
750	5x4	SCF125-100-300	104-163	2980	400
300	5x4	SCF125-100-300	176 - 279	3550	400



400	5x4	SCF125-100-300	173 - 274	3550	400
450	5x4	SCF125-100-300	172 - 272	3550	400
500	5x4	SCF125-100-300	170-269	3550	400
750	5x4	SCF125-100-300	157-247	3550	400
1000	8x6	SCF200-150-310	119-237	2980	350
1250	8x6	SCF200-150-310	112-230	2980	350
1500	8x6	SCF200-150-310	109-221	2980	350
1000	8x6	SCF200-150-310	175-286	3550	370
1250	8x6	SCF200-150-310	168-281	3550	370
1500	8x6	SCF200-150-310	158-269	3550	370
4500	16x14	SCF400-350-640	129-196	1480	315
5000	16x14	SCF400-350-640	127-194	1480	315
5500	16x14	SCF400-350-640	124-192	1480	315
6000	16x14	SCF400-350-640	120-190	1480	315
6500	16x14	SCF400-350-640	116-186	1480	315
7000	16x14	SCF400-350-640	113-182	1480	315
7500	16x14	SCF400-350-640	109-179	1480	315
500	6x5	SCF150-125-250	117-162	2980	310
750	6x5	SCF150-125-250	114-160	2980	310
1000	6x5	SCF150-125-250	103-151	2980	310
500	6x5	SCF150-125-250	137-230	3550	310
750	6x5	SCF150-125-250	138-230	3550	310
1000	6x5	SCF150-125-250	130-225	3550	310
500	6x5	SCF150-125-250S	130-185	3550	290
500	6x5	SCF150-125-310	137-207	2980	370
750	6x5	SCF150-125-310	132-203	2980	370
1000	6x5	SCF150-125-310	121-192	2980	370
500	6x5	SCF150-125-310	196-294	3550	370
750	6x5	SCF150-125-310	191-291	3550	370
1000	6x5	SCF150-125-310	182-283	3550	370
2000	10x8	SCF250-200-500S	118-186	1800	320
2500	10x8	SCF250-200-500S	110-176	1800	320
2000	10x8	SCF250-200-500S	149-234	2000	320
2500	10x8	SCF250-200-500S	141-225	2000	320
500	6x5	SCF150-125-400	208-283	2980	370
750	6x5	SCF150-125-400	203-277	2980	370
1000	6x5	SCF150-125-400	192-265	2980	370
3000	10x8	SCF250-200-500	121-179	1760	340
3500	10x8	SCF250-200-500	136-170	1760	340
3000	10x8	SCF250-200-500	162-238	2000	340
3500	10x8	SCF250-200-500	154-229	2000	340

3000	12x10	SCF300-250-640	176-249	1480	330
3500	12x10	SCF300-250-640	169-242	1480	330
4000	12x10	SCF300-250-640	162-233	1480	330
4000	14x10	SCF350-250-640	138-217	1480	300
4500	14x10	SCF350-250-640	136-216	1480	300
5000	14x10	SCF350-250-640	134-214	1480	300
6000	14x10	SCF350-250-640	127-209	1480	300

Trademark and/or Tradename: "NM FIRE",  南方安美

Last Updated on 2019-01-02

[Questions?](#)

[Print this page](#)

[Terms of Use](#)

[Page Top](#)

© 2018 UL LLC

The appearance of a company's name or product in this database does not in itself assure that products so identified have been manufactured under UL's Follow-Up Service. Only those products bearing the UL Mark should be considered to be Certified and covered under UL's Follow-Up Service. Always look for the Mark on the product.

UL permits the reproduction of the material contained in the Online Certification Directory subject to the following conditions: 1. The Guide Information, Assemblies, Constructions, Designs, Systems, and/or Certifications (files) must be presented in their entirety and in a non-misleading manner, without any manipulation of the data (or drawings). 2. The statement "Reprinted from the Online Certifications Directory with permission from UL" must appear adjacent to the extracted material. In addition, the reprinted material must include a copyright notice in the following format: "© 2018 UL LLC".

# CERTIFICATE OF COMPLIANCE

**Certificate Number** 20180907-EX27656  
**Report Reference** EX27656-20180426  
**Issue Date** 2018-SEPTEMBER-07

**Issued to:** CNP NM FIRE FIGHTING SYSTEM CO LTD  
Factory Area of CNP Changsha Co Ltd  
No.45 Xi Chong Road  
Quan Tang Street, Changsha ETDZ  
Changsha  
Hunan 410100 CHINA

**This is to certify that representative samples of** CENTRIFUGAL FIRE PUMPS, VERTICAL TURBINE  
SEE ADDENDUM PAGE

Have been investigated by UL in accordance with the Standard(s) indicated on this Certificate.

**Standard(s) for Safety:** UL448 Standard for for Centrifugal Stationary Pumps for Fire-Protection Service  
ULC/ORD C448 Guide for The Investigation of Pumps for Fire Protection Service

**Additional Information:** See the UL Online Certifications Directory at [www.ul.com/database](http://www.ul.com/database) for additional information

Only those products bearing the UL Certification Mark should be considered as being covered by UL's Certification and Follow-Up Service.

Look for the UL Certification Mark on the product.



Bruce Mahrenholz, Director North American Certification Program  
UL LLC

Any information and documentation involving UL Mark services are provided on behalf of UL LLC (UL) or any authorized licensee of UL. For questions, please contact a local UL Customer Service Representative at <http://ul.com/aboutul/locations/>





# CERTIFICATE OF COMPLIANCE

**Certificate Number** 20180907-EX27656  
**Report Reference** EX27656-20180426  
**Issue Date** 2018-SEPTEMBER-07

This is to certify that representative samples of the product as specified on this certificate were tested according to the current UL requirements.

Model Dsg: 250VTP400-28, 250VTP550-26, 300VTP860-43, 350VTP860-43, 350VTP1250-36, 400VTP1250-36.



Bruce Mahrenholz, Director North American Certification Program

UL LLC

Any information and documentation involving UL Mark services are provided on behalf of UL LLC (UL) or any authorized licensee of UL. For questions, please contact a local UL Customer Service Representative at <http://ul.com/aboutul/locations/>



Rated Capacity (gpm)	Model Dsg	Rated Net Pressure Range (psi)	Approx Speed (rpm)	Number of Stages
3500	350VTP1250-36	47-62	1480	1
		93-124		2
		140-249		3-4
45-61		1		
4000		90-121		2
		135-243		3-4
		56-74	1600	1
3500		112-148		2
		168-295		3-4
		4000		54-72
107-144				2
161-288				3-4
4000	400VTP1250-36	61-82	1700	1
		122-163		2
		183-245		3
4500		58-79		1
		116-159		2
		174-238		3
5000		229	3	
4000		66-88	1760	1
		133-177		2
		199-265		3
4500		63-86		1
		126-172		2
	189-259	3		
5000	249	3		

Rated Capacity (gpm)	Model Dsg	Rated Net Pressure Range (psi)	Approx Speed (rpm)	Number of Stages
4000	400VTP1250-36	74-98	1840	1
		148-195		2
		222-293		3
4500		70-95		1
		141-190		2
		211-285		3

## CONSTRUCTION DETAILS:

The product has been examined and found to comply with the applicable requirements of the Standard for Pumps for Fire-Protection Service, UL 448, and Guide for the Investigation of Pumps for Fire Protection Service, ULC-ORD-C448 in effect as of the date of this Report

## USE:

The products covered by this Report are intended for use in accordance with the National Fire Protection Association Standard for the Installation of Stationary Pumps for Fire Protection, NFPA 20 and the manufacturer's design, installation, operation, and maintenance manual.





**QXXW.EX27656**  
**Centrifugal Fire Pumps, Vertical Turbine**

Page Bottom

**Centrifugal Fire Pumps, Vertical Turbine**

See General Information for Centrifugal Fire Pumps, Vertical Turbine

**CNP NM FIRE FIGHTING SYSTEM CO LTD**

EX27656

Factory Area of CNP Changsha Co Ltd

No.45 Xi Chong Road

Quan Tang Street, Changsha ETDZ

Changsha, Hunan 410100 CHINA

Rated Capacity gpm	Model Dsg	Rated Net Pressure Range psi	Approx Speed rpm	Stages	
1250	250VTP400-28	41-51	1480	1	
		82-102		2	
		124-153		3	
		165-305		4-6	
1500		40-49		1760	1
		77-97			2
		115-292	3-6		
1500		58-71	1760	1	
		115-143		2	
		173-214		3	
		230-285		4	
2000		63	1760	1	
	125	2			
	188	3			
	251	4			
2000	250VTP550-26	40-44	1480	1	
		77-88		2	
		116-132		3	
		155-176		4	
		194-264		5-6	
2000		57-66	1760	1	
		113-133		2	
		170-199		3	
		227-266		4	
2500		61	1760	1	
	123	2			
	184	3			

		245		4
2500	300VTP860-43	50-82	1480	1
		100-245		2-3
3000		53-78		1
		105-235		2-3
2500	350VTP860-43	74-118	1760	1
		149-236		2
3000		69-115		1
		139-230		2
3500		73-111		1
		146-222		2
4000		104		1
		207		2

Last Updated on 2018-04-30

[Questions?](#)

[Print this page](#)

[Terms of Use](#)

[Page Top](#)

© 2018 UL LLC

The appearance of a company's name or product in this database does not in itself assure that products so identified have been manufactured under UL's Follow-Up Service. Only those products bearing the UL Mark should be considered to be Certified and covered under UL's Follow-Up Service. Always look for the Mark on the product.

UL permits the reproduction of the material contained in the Online Certification Directory subject to the following conditions: 1. The Guide Information, Assemblies, Constructions, Designs, Systems, and/or Certifications (files) must be presented in their entirety and in a non-misleading manner, without any manipulation of the data (or drawings). 2. The statement "Reprinted from the Online Certifications Directory with permission from UL" must appear adjacent to the extracted material. In addition, the reprinted material must include a copyright notice in the following format: "© 2018 UL LLC".



**NNFIRE**  
Protect life, love and history



The protection of life and property is not just a promise